

Northwest Atlantic



Fisheries Organization

Serial No. N106

NAFO SCS Doc. 80/VI/6

Provisional List of Conversion Factors for Selected Northwest Atlantic Species

by

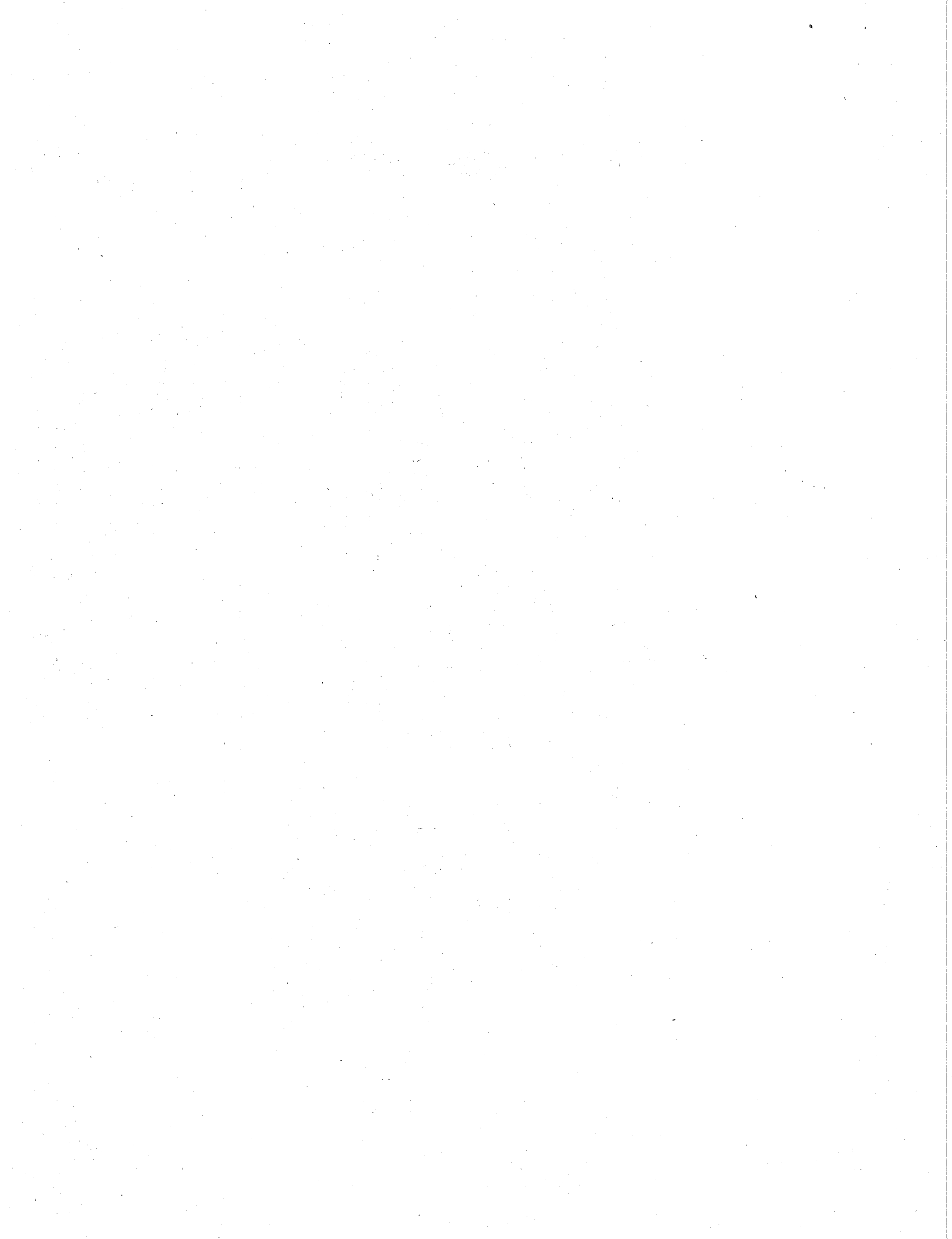
NAFO Secretariat

At the 1979 Annual Meeting, the Secretary of the CWP (Coordinating Working Party on Atlantic Fisheries Statistics) informed STACRES that FAO, in collaboration with other agencies had made considerable progress in updating the lists of national weight conversion factors, previously published in FAO Fish. Bull. No. 25 (1971), and expected to be able to provide provisional lists by the end of 1979. Noting the urgency of having available the updated lists, STACRES recommended "*that the CWP Secretary provide the ICNAF/NAFO Secretariat with the manuscript covering the conversion factors applicable to species caught in the Northwest Atlantic by the various countries, preferably by the end of 1979 or early in 1980 well in advance of the next Annual Meeting*".

Late in 1979, the CWP Secretary provided the Secretariat with provisional lists of available data, which have been compiled for selected species in the following pages. Meanwhile, further additions to the list are being made and a more up-to-date computerized version is expected to be issued by the Secretary of the CWP for review at the 10th Session of the CWP in July 1980.

Contents

<u>Species</u>	<u>Page</u>
Atlantic cod .....	3
Haddock .....	6
Atlantic redfish .....	9
Silver hake .....	10
Pollock .....	11
American plaice .....	13
Witch flounder .....	14
Greenland halibut .....	14
Atlantic halibut .....	15
Cusk .....	17
Roundnose grenadier .....	18
White hake .....	18
Wolffishes .....	19
Sandeel .....	20
Atlantic mackerel .....	21
Atlantic herring .....	22
Bluefin tuna .....	25
Atlantic argentine .....	25
Dogfishes .....	26
Skates .....	26



## ATLANTIC COD

Gutted, head on, tail on	826A	UK ENGLD WAL	1.20
Fresh, chilled, iced	826B	UK SCOTLAND	1.20
	826C	UK NO IRELD	1.20
	840	USA	1.17
	616	POLAND (BALTIC SEA)	1.17
	616	POLAND (NORTHWEST ATLANTIC)	1.19
	752	SWEDEN	1.15
	056	BELGIUM	1.18
	124	CANADA	1.20
	208	DENMARK	1.18
	234	FAEREO IS	1.11
	250	FRANCE	1.24
	304	GREENLAND	1.22
	352	ICELAND	1.25
	372	IRELAND	1.18
	528	NETHERLANDS	1.24
	724	SPAIN	1.33
	280	GERMANY FED	1.24
	578	NORWAY	1.20
Gutted, head on, tail on	280	GERMANY FED	1.18
Frozen	056	BELGIUM	1.19
	826A	UK ENGLAND WAL	1.20
Gutted, head on, tail off	280	GERMANY FED	1.24
Frozen			
Gutted, head off, tail on	616	POLAND (Baltic Sea)	1.68
Fresh, chilled, iced	616	POLAND (Northwest Atlantic)	1.78
	056	BELGIUM	1.64
	752	SWEDEN	1.40
	124	CANADA	1.38
	208	DENMARK	1.60
	304	GREENLAND	1.52
	578	NORWAY (Spawning cod)	1.60
	578	NORWAY	1.40
	578	NORWAY (Cod, other landed from West Greenland)	1.54
	826 A	UK ENGLD WAL	1.50

Gutted, head off, tail on Frozen	280	GERMANY FED	1.71
	578	NORWAY	1.54
	810	USSR	1.56
	056	BELGIUM	1.64
	826A	UK ENGLD WAL	1.50
Gutted, head off, tail off Frozen	280	GERMANY FED	1.77
	056	BELGIUM	1.66
Filletts Frozen	250	FRANCE	2.81
	578	NORWAY	3.50
	124	CANADA	3.70
Filletts & blocks Frozen	124A	CANADA MAR	3.18
	124A	CANADA QUE	3.60
	124B	CANADA NFL	3.18
Filletts, skin on Fresh, chilled, iced	616	POLAND (Baltic Sea)	2.56
Filletts, skin on Frozen	280	GERMANY FED	2.64
	616	POLAND (Northwest Atlantic)	2.78
	056	BELGIUM	2.46
	810	USSR (hand processing)	2.11
	810	USSR (automatic processing)	2.26
Filletts, skinless Frozen	280	GERMANY FED	2.95
	578	NORWAY	3.50
	616	POLAND (Northwest Atlantic)	3.12
	056	BELGIUM	2.81
	826A	UK ENGLD WAL	2.88
	810	USSR (hand processing)	2.23
810	USSR (automatic processing)	2.39	
Filletts, skinless, boneless Fresh, chilled, iced	528	NETHERLANDS	2.81
Filletts, skinless, boneless Frozen	280	GERMANY FED	3.48
	528	NETHERLANDS	2.81
Filletts, skin on Salted	280	GERMANY FED	4.31

Fillets, skinless Salted	280	GERMANY FED	4.80
(Gutted, head off)? Dried	620	PORTUGAL	4.29
	578	NORWAY (to gutted off)	2.32
	620	PORTUGAL (to green salted)	1.43
Stockfish Dried, unsalted	578	NORWAY (to gutted head off)	4.50
Gutted, head off Salted	810	USSR (light)	1.85
	810	USSR (medium)	1.92
	810	USSR (heavy)	1.96
(Gutted, head off)? Salted	578	NORWAY (West Greenland)	2.99
	250	FRANCE	3.50
	352	ICELAND (landed in domestic ports)	2.28
	352	ICELAND (landed abroad)	2.50
	234	FAEROE IS (landed in domestic ports and/or abroad)	2.50
	280	GERMANY FED	2.74
	578	NORWAY	2.41
Gutted, head off, split Salted	280	GERMANY FED	2.74
	056	BELGIUM	3.54
Gutted, head off, boneless Salted	124	CANADA	4.32
(Gutted, head off)? Green salted	124A	CANADA MAR	2.34
	124A	CANADA QUE	2.59
	124B	CANADA NFL	2.34
	250	FRANCE	3.00
	620	PORTUGAL	3.00
	724	SPAIN	3.00
(Gutted, head off)? Light-salted, dried	124B	CANADA NFL	4.80
(Gutted, head off)? Wet-cured	352	ICELAND	2.77

(Gutted, head off)?	124A	CANADA MAR	3.96
Dried-salted	124A	CANADA QUE	4.4
	124B	CANADA NFL	3.96
Whole	124	CANADA	1.70
Smoked			
Gutted or split	124	CANADA	2.04
Smoked			
Fillets	124	CANADA	3.60
Smoked			
(Fillets)?	124	CANADA	3.86
Canned			

## HADDOCK

Gutted, head on, tail on	056	BELGIUM	1.18
Fresh, chilled, iced	124	CANADA	1.20
	208	DENMARK	1.18
	234	FAEROE ISL	1.11
	250	FRANCE	1.17
	280	GERMANY FED	1.20
	352	ICELAND	1.25
	372	IRELAND	1.18
	528	NETHERLAND	1.24
	578	NORWAY	1.20
	616	POLAND	1.16
	752	SWEDEN	1.15
	826A	UK ENGLD WAL	1.20
	826B	UK SCOTLAND	1.125
	826C	UK NO IRELD	1.12
Gutted, head on, tail on	280	GERMANY FED	1.14
Frozen	056	BELGIUM	1.18
	616	POLAND	1.21
	826A	UK ENGLD WAL	1.20

Gutted, head on, tail off Frozen	280	GERMANY FED	1.20
Gutted, head off, tail on Fresh, chilled, iced	124	CANADA	1.38
	578	NORWAY	1.40
	616	POLAND	1.64
	056	BELGIUM	1.64
Gutted, head off, tail on Frozen	280	GERMANY FED	1.54
	056	BELGIUM	1.64
	810	USSR	1.56
Gutted, head off, tail off Frozen	280	GERMANY FED	1.60
	056	BELGIUM	1.66
Fillets, skin on Frozen	280	GERMANY FED	2.70
	056	BELGIUM	2.46
	810	USSR (hand proc)	2.11
	810	USSR (autom.proc)	2.26
	B	POLAND	2.33
Fillets, skinless Frozen	056	BELGIUM	2.95
	280	GERMANY FED	3.00
	616	POLAND	2.70
	810	USSR (hand proc.)	2.23
	810	USSR (autom.proc.)	2.39
	826A	UK ENCLD WAL	2.88
	250	FRANCE	3.00
	278	GERMAN DM RP	2.95
	234	FAEROE IS	3.00
Fillets, skinless, boneless Frozen	280	GERMANY FED	3.37
	528	NETHERLANDS	3.00
Fillets, skinless, boneless Fresh, chilled, iced	528	NETHERLANDS	3.00

Fillets and blocks Frozen	124A	CANADA MAR	3.18
	124A	CANADA QUE	3.60
	124B	CANADA NFL	3.72
Gutted, head off, split Salted	056	BELGIUM	3.54
Gutted, head off Salted	810	USSR (Light)	1.85
	810	USSR (Medium)	1.92
	810	USSR (Heavy)	1.96
Green-salted	124A	CANADA MAR	2.34
	124A	CANADA QUE	2.59
	124B	CANADA NFL	2.34
	578	NORWAY	2.24
	620	PORTUGAL	3.00
Dried-salted	124A	CANADA MAR	3.96
	124A	CANADA QUE	4.44
	124B	CANADA NFL	3.96
Gutted, boneless Salted	124	CANADA	4.32
Round Smoked	124	CANADA	1.70
Dressed or split Smoked	124	CANADA	2.04
Fillets Smoked	124	CANADA	3.60
Canned	124	CANADA	3.86



## REDFISH

Whole, not dressed	280	GERMANY FED	1.07
Fresh, chilled, iced	056	BELGIUM	1.04
	826A	UK ENGLD WAL	1.00
Gutted, head on, tail on	250	FRANCE	1.10
Fresh, chilled, iced	280	GERMANY FED	1.07
	528	NETHERLANDS	1.07
	352	ICELAND	1.06
	826B	UK SCOTLAND	1.125
	616	POLAND	1.11
	124	CANADA	1.20
	578	NORWAY	1.20
Gutted, head off, tail on	280	GERMANY FED	2.02
Fresh, chilled, iced	056	BELGIUM	1.44
	616	POLAND	
	578	NORWAY	1.65
Whole, head on	056	BELGIUM	1.04
Frozen	280	GERMANY FED	1.00
	380	ITALY	1.12
	826A	UK ENGLD WAL	1.00
Gutted, head on, tail off	280	GERMANY FED	1.05
Frozen			
Gutted, head off, tail on	280	GERMANY FED	1.93
Frozen	056	BELGIUM	1.44
	810	USSR	1.51
Gutted, head off, tail off	280	GERMANY FED	1.98
Frozen	056	BELGIUM	1.46
Filletts, skin on	280	GERMANY FED	2.84
Frozen	056	BELGIUM	2.74
	578	NORWAY	2.89
	616	POLAND	3.03
	810	USSR	2.75

Fillets, skinless	280	GERMANY FED		3.00
Frozen	250	FRANCE		2.80
	056	BELGIUM		2.89
	826A	UK ENGLD WAL		2.90
	616	POLAND		3.70
	810	USSR		3.13
Fillets, skinless, boneless	280	GERMANY FED		3.37
Frozen				
Fillets and blocks	124A	CANADA MAR		4.00
Frozen	124A	CANADA QUE		3.60
	124B	CANADA NFL		3.33
Canned	124	CANADA		3.91
Gutted, head on, gills of	810	USSR	Light	1.44
Salted	810	USSR	Medium	1.48
	810	USSR	Heavy	1.50
Gutted, head off	810	USSR	Light	1.80
Salted	810	USSR	Medium	1.87
	810	USSR	Heavy	1.90

## SILVER HAKE

Gutted, head on, tail on	280	GERMANY FED		1.16
Frozen				
Gutted, head off, tail on	280	GERMANY FED		1.55
Gutted, head off	810	USSR		1.42
Frozen				
Gutted, head on	810	USSR		1.37
Salted				
Ungutted, head off	810	USSR		1.76
Salted				

Whole Salted	810	USSR	1.25
Fillets, skinless Frozen	280	GERMANY FED	2.79

## POLLOCK

Gutted, head on, tail on Fresh, chilled, iced	056	BELGIUM	1.18
	124	CANADA	1.20
	208	DENMARK	1.18
	234	FAEROE IS	1.11
	250	FRANCE	1.19
	280	GERMANY FED	1.24
	352	ICELAND	1.25
	372	IRELAND	1.18
	528	NETHERLANDS	1.24
	578	NORWAY	1.20
	826A	UK ENGLD WAL	1.125
	826B	UK SCOTLAND	1.20
	826C	UK NO IRELD	1.12
	840	USA	1.13
Gutted, head off, tail on Fresh, chilled, iced	056	BELGIUM	1.64
	208	DENMARK	1.33
	124	CANADA	1.38
	578	NORWAY	1.35
Gutted, head on, tail on Frozen	280	GERMANY FED	1.18
	056	BELGIUM	1.18
	826	UK ENGLD WAL	1.125
Gutted, head on, tail off Frozen	280	GERMANY FED	1.24
Gutted, head off, tail on Frozen	280	GERMANY FED	1.51
	056	BELGIUM	1.64
	810	USSR	1.56

Gutted, head off, tail off	280	GERMANY FED	1.57
Frozen	056	BELGIUM	1.66
Fillets, skinless, boneless	528	NETHERLANDS	3.10
Fresh, iced, chilled			
Fillets, skin on	280	GERMANY FED	2.12
Frozen	056	BELGIUM	2.57
	810	USSR (hand proc.)	2.11
	810	USSR (autom. proc.)	2.26
Fillets, skinless	280	GERMANY FED	2.43
Frozen	056	BELGIUM	2.68
	826A	UK ENGLD WAL	2.70
	810	USSR (hand proc.)	2.23
	810	USSR (autom. proc.)	2.39
Fillets, skinless, boneless	280	GERMANY FED	2.73
Frozen	528	NETHERLANDS	3.10
Fillets and blocks	124A	CANADA MAR	3.18
Frozen	124A	CANADA QUE	3.60
	124B	CANADA NFL	3.72
	124C	CANADA BRC	3.70
Green-salted	124A	CANADA MAR	2.34
	124A	CANADA QUE	2.59
	124A	CANADA NFL	2.34
Gutted, head off	810	USSR (light)	1.85
Salted	810	USSR (medium)	1.92
	810	USSR (heavy)	1.96
Gutted, head off, split	056	BELGIUM	3.54
Salted	280	GERMANY FED	2.55
Gutted, boneless	124	CANADA	4.32
Salted			

Fillets, skin on Salted	280	GERMANY FED	3.77
Fillets, skinless Salted	280	GERMANY FED	4.15
Fillets Wet-salted	234	FAEROE IS	2.50
Fillets Smoked	124	CANADA	3.60
Round Smoked	124	CANADA	1.70
Dressed or split Smoked	124	CANADA	2.04
Canned	124	CANADA	3.86

### AMERICAN PLAICE

Gutted, head on, tail on	124	CANADA	1.10
Fresh, chilled, iced	616	POLAND	1.18
Gutted, head on, tail on Frozen	826A	UK ENGLD WAL	1.125
Gutted, head off Frozen	616	POLAND	1.49
Fillets, skin on Frozen	616	POLAND	2.32
Fillets and blocks Frozen	124A	CANADA MAR	3.75
	124A	CANADA QUE	4.00
	124B	CANADA NFL	4.65
Fillets, skinless Frozen	616	POLAND	2.94

## WITCH FLOUNDER

Gutted, head on, tail on	056	BELGIUM	1.08
Fresh, chilled, iced	124	CANADA	1.10
	208	DENMARK	1.05
	280	GERMANY FED	1.11
	616	POLAND	1.09
	826A	UK ENGLD WAL	1.125
	826A	UK SCOTLAND	1.125
	826C	UK NO IRELD	1.12
Gutted, head on, tail on	280	GERMANY FED	1.11
Frozen	826A	UK ENGLD WAL	1.125
Gutted, head off, tail on	280	GERMANY FED	1.39
Frozen			
Fillets, skin on	616	POLAND	1.92
Fresh, chilled, iced			
Fillets, skinless	616	POLAND	3.22
Fresh			

## GREENLAND HALIBUT

Gutted, head on, tail on	124	CANADA	1.10
Fresh, chilled, iced	280	GERMANY FED	1.11
	304	GREENLAND	1.05
	826A	UK ENGLD WAL	1.125
	578	NORWAY	1.10
Gutted, head off, tail on	124	CANADA	1.15
Fresh, chilled, iced	304	GREENLAND	1.35
	578	NORWAY	1.20
	616	POLAND	1.43
Gutted, head on, tail on	280	GERMANY FED	1.11
Frozen	826A	UK ENGLD WAL	1.125
Gutted, head on, tail off	280	GERMANY FED	1.17
Frozen			

Gutted, head off, tail on Frozen	280	GERMANY FED	1.39
Gutted, head off, tail off Frozen	280	GERMANY FED	1.44
Fillets, skin on Frozen	280 616	GERMANY FED POLAND	2.31 2.00
Fillets, skinless Frozen	280 616 826A	GERMANY FED POLAND UK ENGLD WAL	2.59 2.63 2.70
Fillets and blocks Frozen	124A 124A 124B	CANADA MAR CANADA QUE CANADA NFL	3.60 2.50 3.60
Green-salted	124	CANADA	2.38
Round Pickled	124	CANADA	1.38
Dressed, head on (split) Pickled	124	CANADA	1.65
Dressed, head off Pickled	124	CANADA	1.73

## ATLANTIC HALIBUT

Gutted, head on, tail on Fresh, chilled, iced	056	BELGIUM	1.08
	124	CANADA	1.15
	208	DENMARK	1.05
	234	FAEROE IS	1.11
	280	GERMANY FED	1.11
	304	GREENLAND	1.05
	352	ICELAND	1.09
	528	NETHERLANDS	1.11
	578	NORWAY	1.10
	616	POLAND	1.15
	826A	UK ENGLD WAL	1.125
	826B	UK SCOTLAND	1.125
	840	USA	1.15
	250	FRANCE	1.11

Gutted, head off, tail on	124	CANADA	1.35
Fresh, chilled, iced	304	GREENLAND	1.35
	616	POLAND	1.33
	056	BELGIUM	1.50
	578	NORWAY	1.35
Whole	810	USSR	1.00
Frozen			
Gutted, head on, tail on	280	GERMANY FED	1.11
Frozen	056	BELGIUM	1.08
	826A	UK ENGLD WAL	1.125
	810	USSR	1.08
Gutted, head on, tail off	280	GERMANY FED	1.17
Frozen			
Gutted, head off, tail on	280	GERMANY FED	1.39
Frozen	056	BELGIUM	1.50
	810	USSR	1.29
	578	NORWAY (from Greenland)	1.40
Gutted, head off, tail off	280	GERMANY FED	1.44
Frozen	056	BELGIUM	1.52
Fillets, skinless, boneless	528	NETHERLANDS	2.60
Fresh, chilled, iced			
Fillets, skin on	280	GERMANY FED	2.31
Frozen	616	POLAND	1.82
	810	USSR	1.81
Fillets, skinless	280	GERMANY FED	2.59
Frozen	616	POLAND	2.04
Fillets, skinless, boneless	528	NETHERLANDS	2.60
Frozen			
Fillets and blocks	124A	CANADA MAR	2.03
Frozen	124A	CANADA QUE	3.65
	124B	CANADA NFL	2.03



Gutted, head on	810	USSR	(lightly salted)	1.31
Salted	810	USSR	(medium and heavy-salted)	1.39
Gutted, head off	810	USSR	(lightly salted)	1.60
Salted	810	USSR	(medium and heavy-salted)	1.72

## CUSK

Gutted, head on, tail on	056	BELGIUM		1.18
Fresh, chilled, iced	124	CANADA		1.20
	234	FAEROE IS		1.11
	280	GERMANY FED		1.17
	352	ICELAND		1.11
	528	NETHERLANDS		1.24
	752	SWEDEN		1.18
	826A	UK ENGLD WAL		1.125
	826B	UK SCOTLAND		1.20
	840	USA		1.13
Gutted, head off, tail on	056	BELGIUM		1.64
Fresh, chilled, iced	124	CANADA		1.38
	578	NORWAY		1.40
Gutted, head on, tail on	280	GERMANY FED		1.11
Frozen	056	BELGIUM		1.18
	826A	UK ENGLD WAL		1.125
Gutted, head off, tail on	280	GERMANY FED		1.40
Frozen				
Gutted, head off, tail off	056	BELGIUM		1.66
Frozen				
Filletts, skin on	056	BELGIUM		2.03
Frozen				
Filletts, skinless	056	BELGIUM		2.10
Frozen	280	GERMANY FED		2.30
Filletts and blocks	124A	CANADA MAR		3.18
Frozen	124A	CANADA QUE		3.60
	124B	CANADA NFL		3.72

Green salted	578	NORWAY	2.41
	124A	CANADA MAR	2.34
	124A	CANADA QUE	2.59
	124B	CANADA NFL	2.34
Wet-salted	234	FAEROE IS	2.50
Dried salted	124A	CANADA MAR	3.96
	124A	CANADA QUE	4.44
	124B	CANADA NFL	3.96
Salted boneless	124	CANADA	4.32
Round Smoked	124	CANADA	1.70
Dressed or split Smoked	124	CANADA	2.04
Filletts Smoked	124	CANADA	3.60
Canned	124	CANADA	3.86

### ROUNDNOSE GRENADIER

Gutted, head on, tail on Fresh, chilled, iced	280	GERMANY FED	1.04
Gutted, head off, tail off Frozen	810	USSR	2.11
Filletts, skin off Frozen	280	GERMANY FED	2.60

### WHITE HAKE

Gutted, head on, tail on Fish, chilled, iced	124	CANADA	1.20
Gutted, head off, tail on Fresh, chilled, iced	124	CANADA	1.38
	840	USA	1.34

Filletts and blocks Frozen	124A	CANADA MAR	3.18
	124A	CANADA QUE	3.60
	124B	CANADA NFL	3.72
Round Smoked	124	CANADA	1.70
Dressed or split Smoked	124	CANADA	2.04
Filletts Smoked	124	CANADA	3.60
Green-salted	124A	CANADA MAR	2.34
	124A	CANADA QUE	2.59
	124B	CANADA NFL	2.34
Dried-salted	124A	CANADA MAR	3.96
	124A	CANADA QUE	4.44
	124B	CANADA NFL	3.96
Boneless salted	124	CANADA	4.32
Canned	124	CANADA	3.86

## WOLFFISHES

Gutted, head on, tail on Fresh, chilled, iced	124	CANADA	1.20
	056	BELGIUM	1.18
	304	GREENLAND	1.15
	280	GERMANY FED	1.25
	352	ICELAND	1.11
	528	NETHERLANDS	1.24
	616	POLAND	1.18
	752	SWEDEN	1.18
	826A	UK ENGLD WAL	1.125
	826B	UK SCOTLAND	1.125
	578	NORWAY	1.10
	840	USA	1.20
	Gutted, head off, tail on Fresh, chilled, iced	124	CANADA
056		BELGIUM	1.64
616		POLAND	1.54

Gutted, head on, tail on Frozen	280	GERMANY FED	1.15
	056	BELGIUM	1.18
	826A	UK ENGLD WAL	1.125
Gutted, head on, tail off Frozen	280	GERMANY FED	1.25
Gutted, head off, tail on Frozen	280	GERMANY FED	1.69
	810	USSR	1.48
	578	NORWAY	1.65
Gutted, head off, tail off Frozen	280	GERMANY FED	1.75
Gutted, head on, boneless Salted	810	USSR	1.61
Gutted, head off, boneless Salted	810	USSR	2.44
Fillets and blocks Frozen	124A	CANADA MAR	3.18
	124A	CANADA QUE	3.60
	124B	CANADA NFL	3.48
Fillets, skinless, boneless Frozen	280	GERMANY FED	3.51
Fillets, skinless Frozen	280	GERMANY FED	3.29
	056	BELGIUM	3.28
	826A	UK ENGLD WAL	2.70
	616	POLAND	2.78
	810	USSR	2.58
Fillets, skin on Frozen	280	GERMANY FED	2.98
	056	BELGIUM	2.95
	810	USSR	2.26

## SANDEEL

Gutted, head on, tail on Fresh, chilled, iced	208	DENMARK	1.00
	578	NORWAY	1.00

## ATLANTIC MACKEREL

Whole, not dressed	056	BELGIUM	1.04
Fresh, chilled, iced	250	FRANCE	1.04
	280	GERMANY FED	1.08
	528	NETHERLANDS	1.04
	826A	UK ENGLD WAL	1.00
Gutted, head on	124	CANADA	1.20
Fresh, chilled, iced	528	NETHERLANDS	1.28
	752	SWEDEN	1.30
	578	NORWAY	1.15
Gutted, head off, tail on	056	BELGIUM	1.44
Fresh, chilled, iced	578	NORWAY	1.30
Whole, head on	280	GERMANY FED	1.00
Frozen	380	ITALY	1.12
	528	NETHERLANDS	1.04
	826A	UK ENGLD WAL	1.00
Gutted, head on, tail on	280	GERMANY FED	1.08
Frozen	056	BELGIUM	1.04
Gutted, head off, tail on	280	GERMANY FED	1.11
Frozen	056	BELGIUM	1.44
Gutted, head off, tail off	056	BELGIUM	1.46
Frozen			
Fillets, skin on	280	GERMANY FED	1.92
Frozen			
Fillets, skinless	056	BELGIUM	2.00
Frozen			
Fillets & blocks	124A	CANADA	2.00
Frozen	124B	CANADA NFL	1.80
Head on, full, shotten	528	NETHERLANDS	1.33
Salted			
Round	124	CANADA	2.00
Smoked	528	NETHERLANDS	1.33
Dressed	124	CANADA	2.40
Smoked			

Fillets Smoked	124	CANADA	3.00
Dressed or split Pickled	124A	CANADA MAR	1.75
	124A	CANADA QUE	1.68
	124B	CANADA NFL	1.68
Fillets Pickled	124A(M)	CANADA MAR	2.00
	124A(O)	CANADA QUE	3.00
	124B	CANADA NFL	2.25
Fillets Canned	124	CANADA	3.00
Canned	528	NETHERLANDS	1.18

### ATLANTIC HERRING

Whole, not dressed	056	BELGIUM	1.04
Fresh, chilled, iced	250	FRANCE	1.04
	280	GERMANY FED	1.08
	528	NETHERLANDS	1.04
	826A	UK ENGLD WAL	1.00
	826B	UK SCOTLAND	1.00
Dressed, head on Fresh, chilled, iced	124	CANADA	1.20
Gutted, head off, tail on Fresh, chilled, iced	056	BELGIUM	1.44
Whole, head on Frozen	280	GERMANY FED	1.00
	380	ITALY	1.12
	528	NETHERLANDS	1.04
	826A	UK ENGLD WAL	1.00
Gutted, head on, tail on Frozen	056	BELGIUM	1.04
Gutted, head off, tail on Frozen	280	GERMANY FED	1.18
	056	BELGIUM	1.44

Gutted, head off, tail off	056	BELGIUM	1.46
Frozen	280	GERMANY FED	1.54
Filletts	752	SWEDEN	2.00
Fresh, chilled, iced			
Filletts, skin on	056	BELGIUM	1.93
Frozen	280	GERMANY FED	2.03
	826A	UK ENGLD WAL	2.00
	752	SWEDEN	2.00
Filletts, skinless	056	BELGIUM	2.89
Frozen	250	FRANCE	2.50
Filletts and blocks	124	CANADA	2.0
Frozen			
Head on, full, shotten	528	NETHERLANDS	1.25
Salted			
Gutted, head on, with bones	280	GERMANY FED	1.46
Salted	528	NETHERLANDS	1.36
	752	SWEDEN	1.42
Gutted, head off	280	GERMANY FED	1.61
Salted			
Round	124A	CANADA MAR	
Smoked		QUE	2.00
	124B	CANADA NFL	2.10
	528	NETHERLANDS	1.35
Dressed	124A	CANADA MAR	
Smoked		QUE	2.40
	124B	CANADA NFL	2.50
Bloaters	124A	CANADA MAR	2.20
Salted and smoked	124A	CANADA QUE	2.90
	124B	CANADA NFL	2.20
Boneless	124	CANADA	4.00
Salted and smoked			
Round	124	CANADA	1.30
Pickled			
Dressed or split	124	CANADA	1.30
Pickled			

Kippers Smoked and kippered	124A	CANADA MAR QUE		2.00
	124B	CANADA NFL		2.10
Fillets Smoked	124A	CANADA MAR QUE		6.20
	124B	CANADA NFL		4.00
Fillets, skin on Salted	280	GERMANY FED		3.50
Fillets, skin on Pickled	124	CANADA		2.30
Fillets, skinless Pickled	124	CANADA		2.68
Canned	528	NETHERLANDS		1.25
Marinated, canned	752	SWEDEN		1.56
Canned meat	124	CANADA		1.56
Kippers Canned	124	CANADA		1.50
Fillets Canned	124	CANADA		2.00
Gutted, head off Frozen	810	USSR		1.26
Fillets, skin on Frozen	810	USSR		1.66
Whole Salted	810	USSR	medium	1.16
	810	USSR	heavy	1.18
Ungutted Lightly salted	810	USSR		1.13
Gutted, gills off Salted	810	USSR	light	1.25
	810	USSR	medium	1.28
	810	USSR	heavy	1.30
Gutted, head off Salted	810	USSR	light	1.42
	810	USSR	medium	1.45
	810	USSR	heavy	1.48



Whole Frozen	810	USSR		1.01
Gutted, head off Frozen	810	USSR		1.29
Whole Salted	810	USSR	light	1.17
	810	USSR	medium	1.18
	810	USSR	heavy	1.20
Gutted, head off Salted	810	USSR	light	1.51
	810	USSR	medium	1.53
	810	USSR	heavy	1.54

### BLUEFIN TUNA

Gutted, head on, tail on Fresh, chilled, iced	280	GERMANY FED		1.20
Gutted, head off, tail on Fresh, chilled, iced	250	FRANCE		1.11
	208	DENMARK		1.33
Gutted, head off, tail on Frozen	280	GERMANY FED		1.50
Fillets, skinless Frozen	280	GERMANY FED		4.00

### ARGENTINE

Whole Frozen	810	USSR		1.00
Nobbed Frozen	616	POLAND		1.47
Gutted, head off Frozen	810	USSR		1.48
Whole Salted	810	USSR		1.25
Gutted, head on Salted	810	USSR		1.38
Gutted, head off Salted	810	USSR		1.84

## DOGFISHES

Gutted, head on, tail on Fresh, chilled, iced	250	FRANCE	1.33
	280	GERMANY FED	1.33
	826A	UK ENGLD WAL	1.125
	826B	UK SCOTLAND	1.125
	124	CANADA	1.20
Gutted, head off, tail on Fresh, chilled, iced	578	NORWAY	1.10
	056	BELGIUM	1.44
	208	DENMARK	1.33
Gutted, head on, tail on Frozen	578	NORWAY	1.30
	280	GERMANY FED	1.26
	056	BELGIUM	1.04
Gutted, head off, tail on Frozen	826A	UK ENGLD WAL	1.125
	280	GERMANY FED	1.44
	056	BELGIUM	1.44
Gutted, head off, tail off Frozen	056	BELGIUM	1.46
	280	GERMANY FED	2.59
Filletts, skinless Frozen			

## SKATES

Gutted, head on, tail on Fresh, chilled, iced	280	GERMANY FED	1.21
	250	FRANCE	1.21
	528	NETHERLANDS	1.20
	056	BELGIUM	1.08
	826A	UK ENGLD WAL	1.125
	826B	UK SCOTLAND	1.20
	372	IRELAND	1.15
	578	NORWAY	1.15
Gutted, head off, tail on Fresh, chilled, iced	208	DENMARK	1.33
	578	NORWAY	1.50
Filletts, skinless Frozen	250	FRANCE	2.81
	056	BELGIUM	3.18
Dressed, head off	124	CANADA	4.00
Wings and filletts	124	CANADA	4.00



Serial No. N106

NAFO SCS Doc. 80/VI/6  
Corrigendum

SCIENTIFIC COUNCIL MEETING - JUNE 1980

Provisional List of Conversion Factors for Selected Northwest Atlantic Species

by

NAFO Secretariat

After the preparation and distribution of SCS Doc. 80/VI/6 in early May 1980, based on information supplied by the Secretary of the CWP (Coordinating Working Party on Atlantic Fishery Statistics), Norway has reported the revisions to int conversion factors as listed in the following table. The page numbers listed refer to page numbers in the original summary document.

It should also be noted that, subsequent to the preparation of the provisionsl material in SCS Doc. 80/VI/6, FAO has issued the following publication:

Quantity Conversion Factors: Atlantic Fish Species, Landed or Product Weight to Live Weight. FAO Fisheries Circular No. 725, 217 p. (Printed March 1980).

Page	Species	Specification	Further information	New conversion factor
3	Atlantic cod	Gutted, head off, tail on, fresh, chilled, iced	Cod landed from West Greenland	Deleted-same factor as cod from other areas
4	" "	Gutted, head off, tail on, frozen		1.40
4	" "	Fillets, frozen		2.37
4	" "	Fillets, skin on, frozen	Not listed	2.37
4	" "	Fillets, skinless, frozen		2.37
5	" "	Gutted, head off - dried	To gutted, head off	2.43
5	" "	Gutted, head off - dried	To gutted head off cod landed from West Atlantic (not listed)	2.56
5	" "	Stock fish, dried - unsalted	To gutted, head off	4.35
5	" "	Gutted, head off, salted	Cod landed from West Atlantic	2.50
5	" "	Gutted, head off, salted	Landed from other areas	2.38
7	Haddock	Fillets, skin on, frozen	Not listed	2.37
8	"	Gutted, head off, salted	Not listed	2.38
8	"	Green - salted		Deleted
9	Redfish	Fillets, skin on, frozen		4.77
12	Pollock	Fillets, skin on, frozen	Not listed	2.28
12	"	Gutted, head off, salted	Not listed	2.30
14	Greenland halibut	Gutted, head off, tail on, fresh	Landed from West Atlantic - not listed	1.40
15	" "	Fillets, skin on, frozen	Not listed	1.97
17	Cusk	Gutted, head on, tail on, fresh, chilled, iced	Not listed	1.20
18	"	Green salted		Deleted
18	"	Salted	Not listed	2.38
20	Wolffishes	Fillets, skin on	Not listed	4.07
26	Skates	Wings	Not listed	2.50