

# Addressing the impacts of climate change on NAFO fisheries

Dan Boyce  
[www.danielboyce.ca](http://www.danielboyce.ca)



# Global climate picture: The highlights

## Trends:

- Warming: surface and bottom
- Reduced sea ice
- Reduced mixing, increased stratification, reduced nutrient flux
- Acidification
- Hypoxia: dead zones
- Increased salinity
- Greater extremes

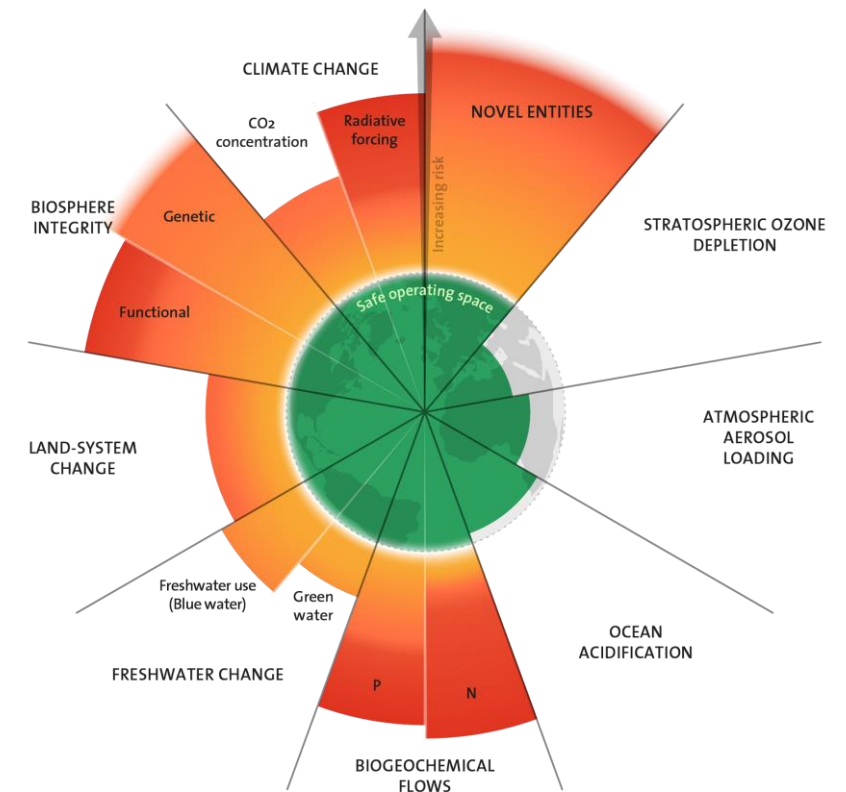
## Biological impacts:

- Reduced NPP, altered size and community composition
- Ecological disruption: Geographic shifts, phenology, abundance, mortality, growth, trophic structure, disease
- Fisheries: 4.1% decline in MSY since 1930 (Free *et al.* 2019 *Science*)

→ Significant geographic variation

→ Heightened uncertainty

## Departing Earth's safe operating spaces



# Outline (Terms of Reference)

- Review the most recent ocean **climate change predictions** in the Northwest Atlantic for the following 10 years and 50 years and summarize how this may affect the ecosystem and the likely impacts on managed stocks and non-target species.
- Identify any **new data requirements** needed to detect and monitor climate-related changes in the key ocean variables, including fished stocks, bycatch species, and changes in catch and effort patterns and distributional shifts across stock boundaries. Comment on the existing and potential methods by which such data sets could be collected.
- Summarize the literature and data available to address potential **climate change impacts** on NAFO-managed stocks, non-target species and associated ecosystems.
- Describe the data available to determine **climate change-related distributional shifts** of the managed stocks across stock boundaries, including transboundary stocks.
- Identify how the long-term unidirectional changes and shorter-term extreme variability in environmental conditions characteristic of climate change could **be incorporated into stock NAFO stock assessments**.

1. *Climate changes*



2. *Climate impacts*



3. *Climate resilience*

# Outline (Terms of Reference)

## 1. Climate *changes*



- Historical
- Projected
- Direction, magnitude
- Scales of variance

## 2. Climate *impacts*



- Species, ecosystems, fisheries
- NAFO species

## 3. Climate *resilience*

- Data and monitoring
- Knowledge and approaches
- NAFO Roadmap

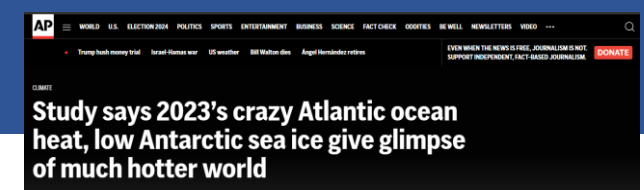
# Methods

- 1) **Literature review:** >800 peer-reviewed studies, reports, assessments relevant to the ToRs; summarized and tabulated (Appendices).
- 2) **Climate models:** 2 High resolution CMIP6 climate models projecting surface and bottom temperature under contrasting emission scenarios.
  - Trends evaluated to 2050 across the NAFO area.
- 3) **Projected climate impacts:** Magnitude and timing of climate impacts on NAFO managed species using the Climate Risk Index for Biodiversity (CRIB) framework
  - Species distributions
  - Climate projections
  - Species thermal niche

# The NW Atlantic is a climate change hotspot

- Surface warming: Globally extreme; 2012, 2023 anomalously warm
- Bottom warming: Warming more modestly
- Oxygen: Decline virtually everywhere since 1960
- Acidification: Increasing more rapidly than global average
- Reduced mixing, nutrient flux, phytoplankton, NPP → yet increased bloom frequency, intensity
- Sea ice: Decline since 1969, 2010, 2011, 2021 lowest values
- Salinity: Increasing due to evaporation

**\*\*Spatial variability in nature, magnitude of changes**



**Ocean off Newfoundland currently has greatest temperature increase in North America, says researcher**

It's part of an upward trend in Atlantic Ocean temperatures, says ocean scientist

CBC News · Posted: Jul 23, 2023 6:30 AM ADT | Last Updated: July 24, 2023

[f](#) [X](#) [✉](#) [📺](#) [in](#) [🗨️](#) [comments](#)



**nature**

[Explore content](#) [About the journal](#) [Publish with us](#)

[nature](#) > [articles](#) > article

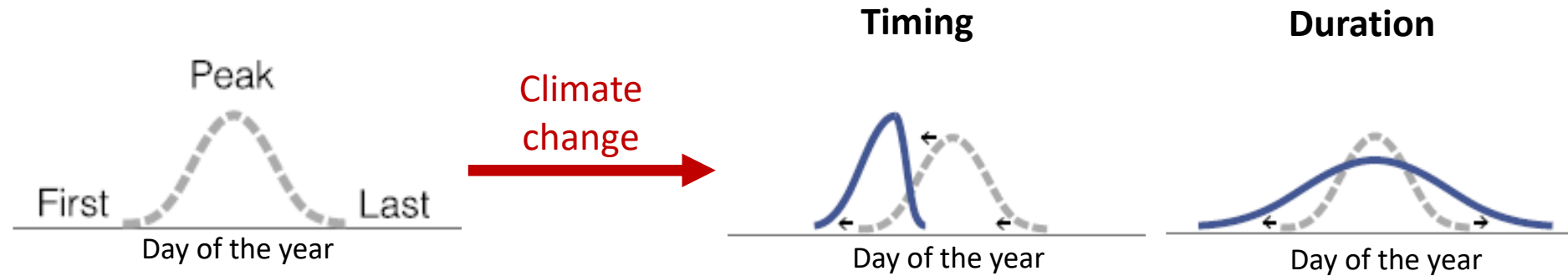
Article | [Open access](#) | Published: 01 March 2023

**Coastal phytoplankton blooms expand and intensify in the 21st century**

[Yanhui Dai](#), [Shangbo Yang](#), [Dan Zhao](#), [Chuanmin Hu](#), [Wang Xu](#), [Donald M. Anderson](#), [Yun Li](#), [Xiao-Peng Song](#), [Daniel G. Boyce](#), [Luke Gibson](#), [Chunmiao Zheng](#) & [Lian Feng](#) [✉](#)

# Complex climate changes

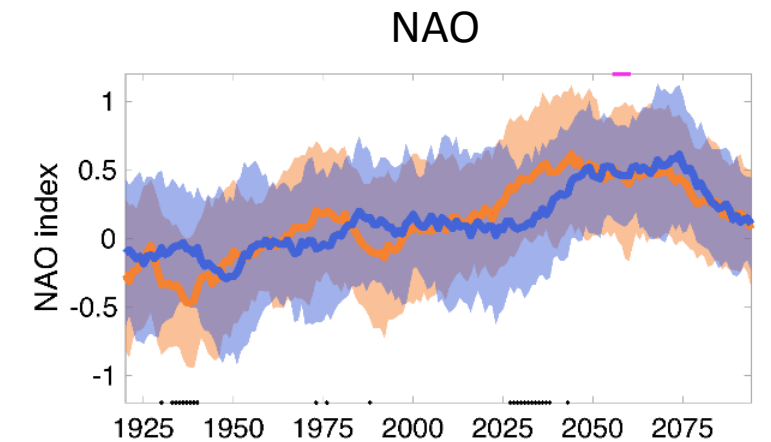
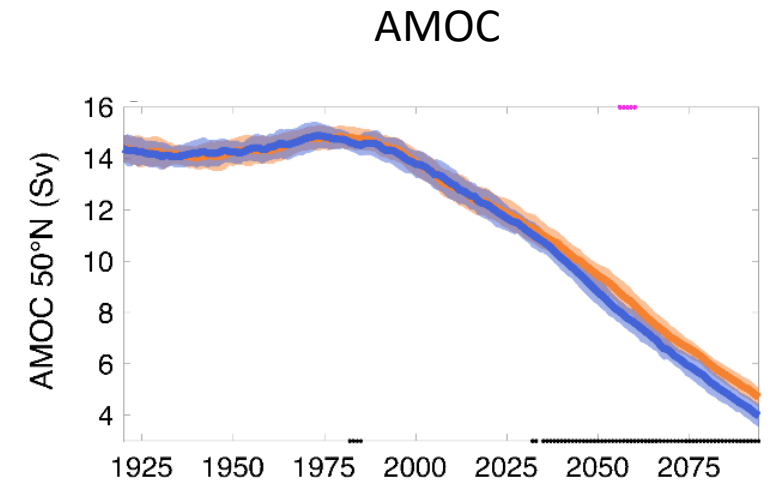
- Shifting phenology
- Geographic movement: Warming spreading northward and deeper
- Increased variability and extremes: “Black swans”
- Novel climate: *e.g.*, heatwaves
- Climate tipping points: *e.g.*, AMOC slow down
- Climate variability: *e.g.*, Shifted towards more positive NAO since 2012



# The NW Atlantic will remain a climate change hotspot

## Projections to 2100:

- Surface warming: up to  $\sim 4^{\circ}\text{C}$  ( $\sim 2\times$  the global average)
- Bottom warming: up to  $\sim 3^{\circ}\text{C}$
- Sea ice:  $\sim 15\%$  decline per degree warming
- Near permanent heatwave conditions at many locations
- Increased stratification, reduced mixing, nutrient flux, primary production with spatial variability
- Reduction in AMOC
- Increased intensity of NAO (possibly)
- Marine animal biomass:  $-25.5\%$  (Canadian EEZ), but increases at high latitudes (Bryndum-Buchholz et al. 2020)
- 41% of transboundary fish stocks projected to shift by 2100 (Palacios-Abrantes et al. 2022)

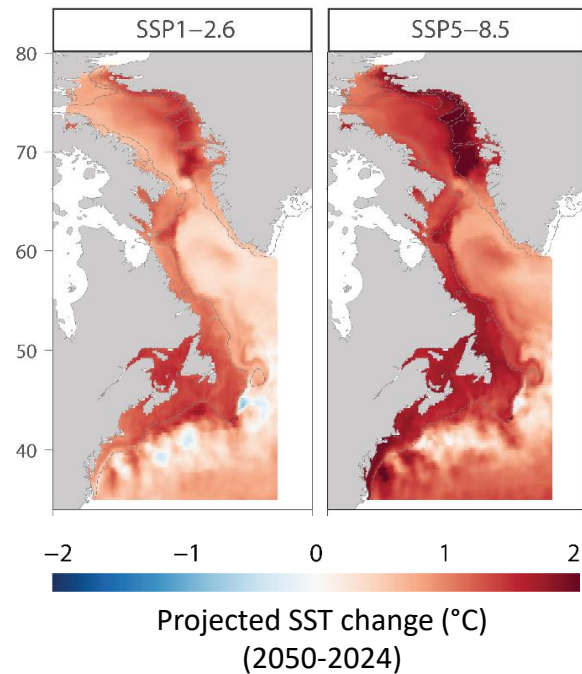




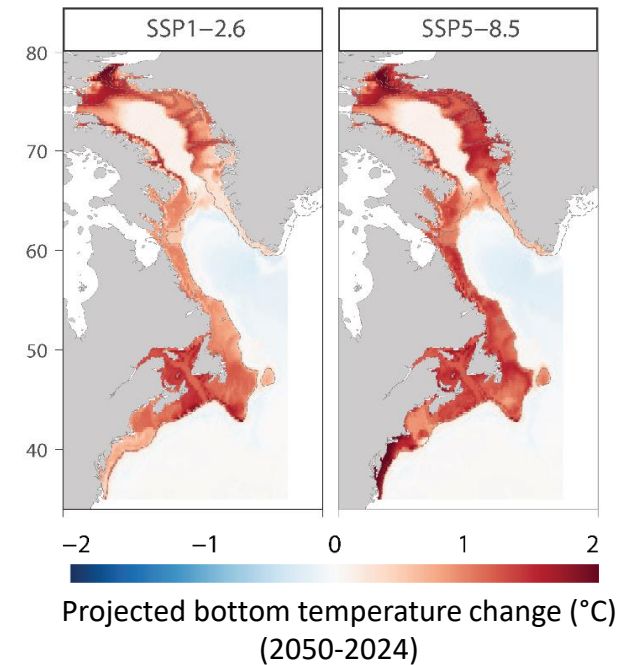
# Climate projections

## Temperature projections to 2050:

- Ensemble projections from two high resolution CMIP6 ESM models
- Trend: difference in decadal averaged temperature (2050-2024)

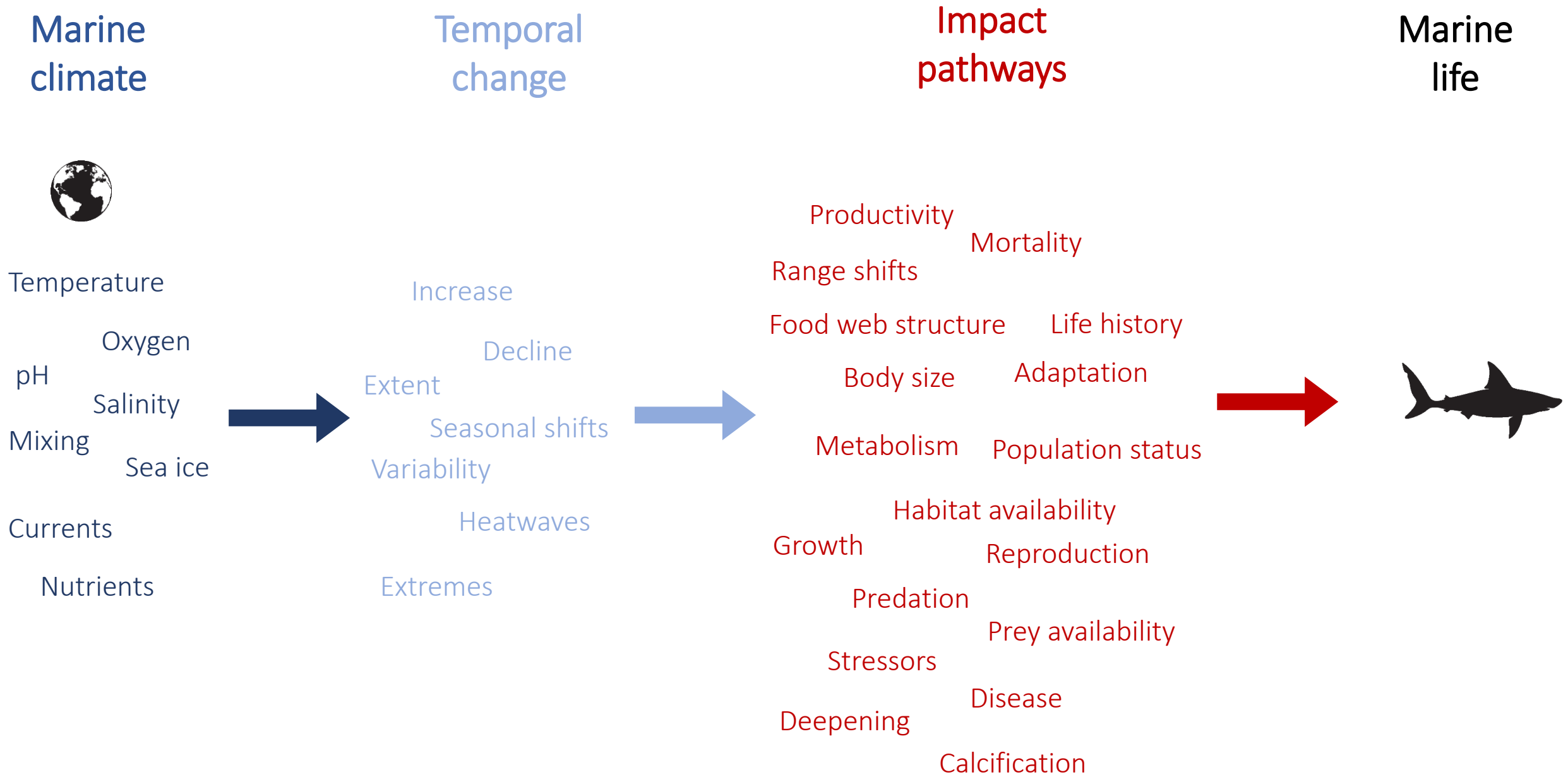


- **Average warming:**  $\sim 1^\circ\text{C}$
- **Spatial variability:**  $>2.5^\circ\text{C}$  vs. slight cooling



- **Average warming:**  $\sim 0.5^\circ\text{C}$
- **Spatial variability:**  $>2^\circ\text{C}$  vs. slight cooling
- **Grand Banks:** Greater warming of bottom than surface in some areas

# Climate impacts on marine life



## Body size

- Warming reducing body sizes for primary/secondary producers
- 60% decline in body mass of marine species between 1970 and 2008 (Shackell et al. 2010)

## Range expansion/contraction

- Variable

## Calcification rates

- Reduced

## Primary production

- Reduced globally, increased at poles
- Composition changes

## Predator-prey interactions

- Temperature an overarching driver of trophic control (direct + indirect)
- Complex effects on plankton, endotherms

## Mortality

- Hypoxia, warming, associated with mass mortality

## Thermal bottlenecks

- Greater vulnerability of early life stages

## Novel ecosystems

- Unknown function

## Disease

- Increased geographic, seasonal range
- Poleward range shift of *Vibrio* in the North Atlantic, the North Sea, the Baltic Sea, and Alaska
- Climate rendering spp. more susceptible to infection

## Trophic mismatch

- Shifting phenology affects early life stages, recruitment
- Shrimp egg-hatching times related to spring timing of phytoplankton and temperature

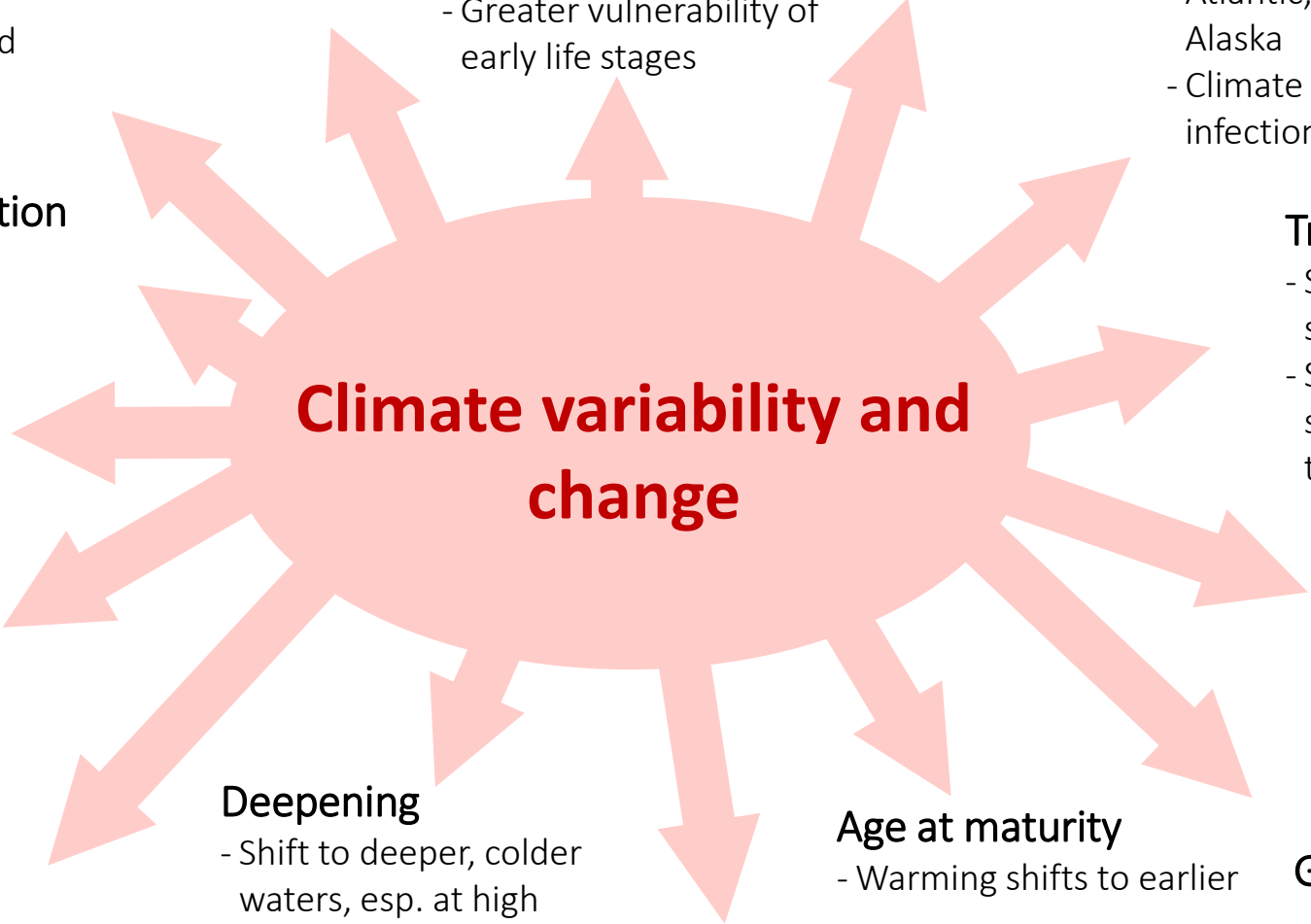
## Growth & metabolism

- Variable

## Geographic shifts

- Northward ("tropicalization")
- Poleward shifts in 17 of 36 commercial fish stocks between 1968 and 2007 in US waters (Nye et al. 2009)

# Climate variability and change



## Deepening

- Shift to deeper, colder waters, esp. at high latitudes

## Age at maturity

- Warming shifts to earlier

## Trophic amplification

- Warming has disproportionate impacts on high trophic species

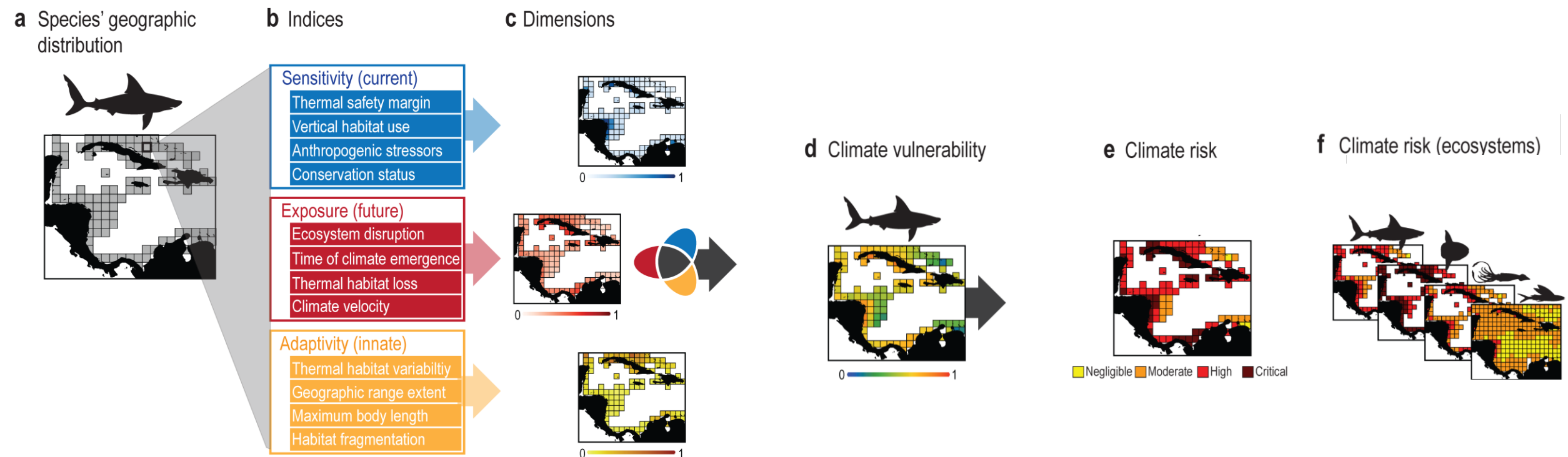
# Climate impacts on NAFO species

## Climate Risk Index for Biodiversity (CRIB): Spatially explicit climate risk for species, stocks, ecosystems

### A climate risk index for marine life

Daniel G. Boyce<sup>1,2,5\*</sup>, Derek P. Tittensor<sup>1,3</sup>, Cristina Garilao<sup>4</sup>, Stephanie Henson<sup>5</sup>, Kristin Kaschner<sup>6</sup>, Kathleen Kesner-Reyes<sup>7</sup>, Alex Pigot<sup>8</sup>, Rodolfo B. Reyes Jr.<sup>9</sup>, Gabriel Reygondeau<sup>9</sup>, Kathryn E. Schleit<sup>10</sup>, Nancy L. Shackell<sup>2</sup>, Patricia Sorongon-Yap<sup>7</sup> and Boris Worm<sup>1</sup>

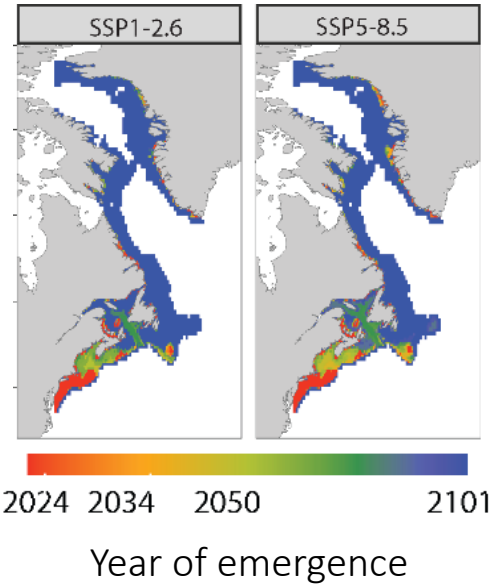
Climate change is impacting virtually all marine life. Adaptation strategies will require a robust understanding of the risks to species and ecosystems and how those propagate to human societies. We develop a unified and spatially explicit index to comprehensively evaluate the climate risks to marine life. Under high emissions (SSP5-8.5), almost 90% of ~25,000 species are at high or critical risk, with species at risk across 85% of their native distributions. One tenth of the ocean contains ecosystems where the aggregated climate risk, endemism and extinction threat of their constituent species are high. Climate change poses the greatest risk for exploited species in low-income countries with a high dependence on fisheries. Mitigating emissions (SSP1-2.6) reduces the risk for virtually all species (98.2%), enhances ecosystem stability and disproportionately benefits food-insecure populations in low-income countries. Our climate risk assessment can help prioritize vulnerable species and ecosystems for climate-adapted marine conservation and fisheries management efforts.



# Example: Atlantic wolffish (*Anarhichas lupus*)

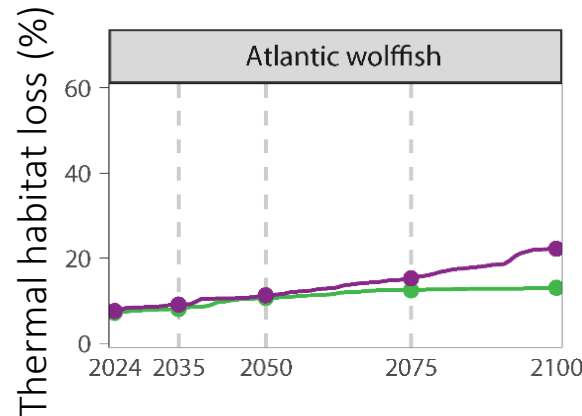


## Projected climate exposure



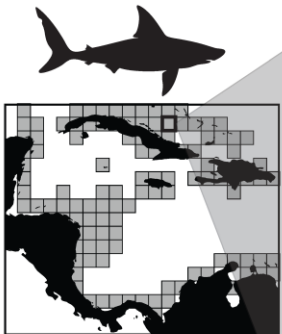
## Observed climate responses

Species	Studies
Atlantic wolffish	(Árnason, Gunnarsson, Steinarsson, Daníelsdóttir, & Björnsson, 2019; Barhri et al., 2021; Bianucci, Fennel, Chabot, Shackell, & Lavoie, 2016; Bluemel, Fischer, Kulka, Lynam, & Ellis, 2022; Brennan, Blanchard, & Fennel, 2016; Dutil, Proulx, Chouinard, Borcard, & Larocque, 2014; Fock, 2007; Grant & Hiscock, 2014; Gunnarsson, 2017; Hansen & Falk-Petersen, 2002; A. K. Imsland, Foss, Sparboe, & Sigurdsson, 2006; Albert K. Imsland, Gunnarsson, Foss, Sigurdsson, & Sigurdsson, 2009; S. G. Lamarre, Blier, Driedzic, & Le François, 2010; Simon G. Lamarre, Le François, Driedzic, & Blier, 2009; Lavin et al., 2022; Lemieux, Tardif, Dutil, & Blier, 2010; Magnussen, Imsland, & Foss, 2008; McCarthy, Moksness, Pavlov, & Houlihan, 1999; Orlov, Orlova, Rybakov, Emelianova, & Vedishcheva, 2023)



**\*High climate risk**

### a Species' geographic distribution



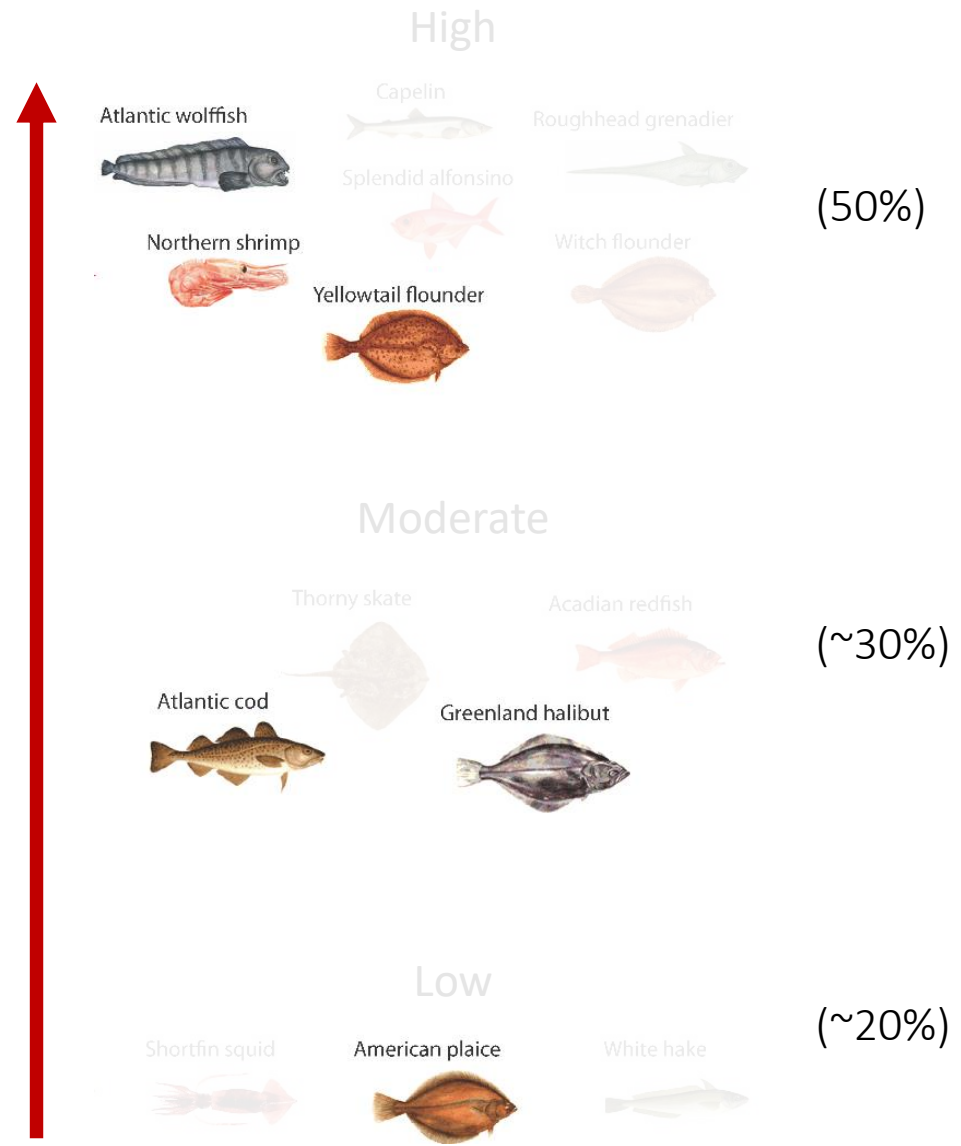
### b Indices

- Sensitivity (current)**
  - Thermal safety margin
  - Vertical habitat use
  - Anthropogenic stressors
  - Conservation status
- Exposure (future)**
  - Ecosystem disruption
  - Time of climate emergence
  - Thermal habitat loss
  - Climate velocity
- Adaptivity (innate)**
  - Thermal habitat variability
  - Geographic range extent
  - Maximum body length
  - Habitat fragmentation

# Climate impacts on NAFO species

Many studies

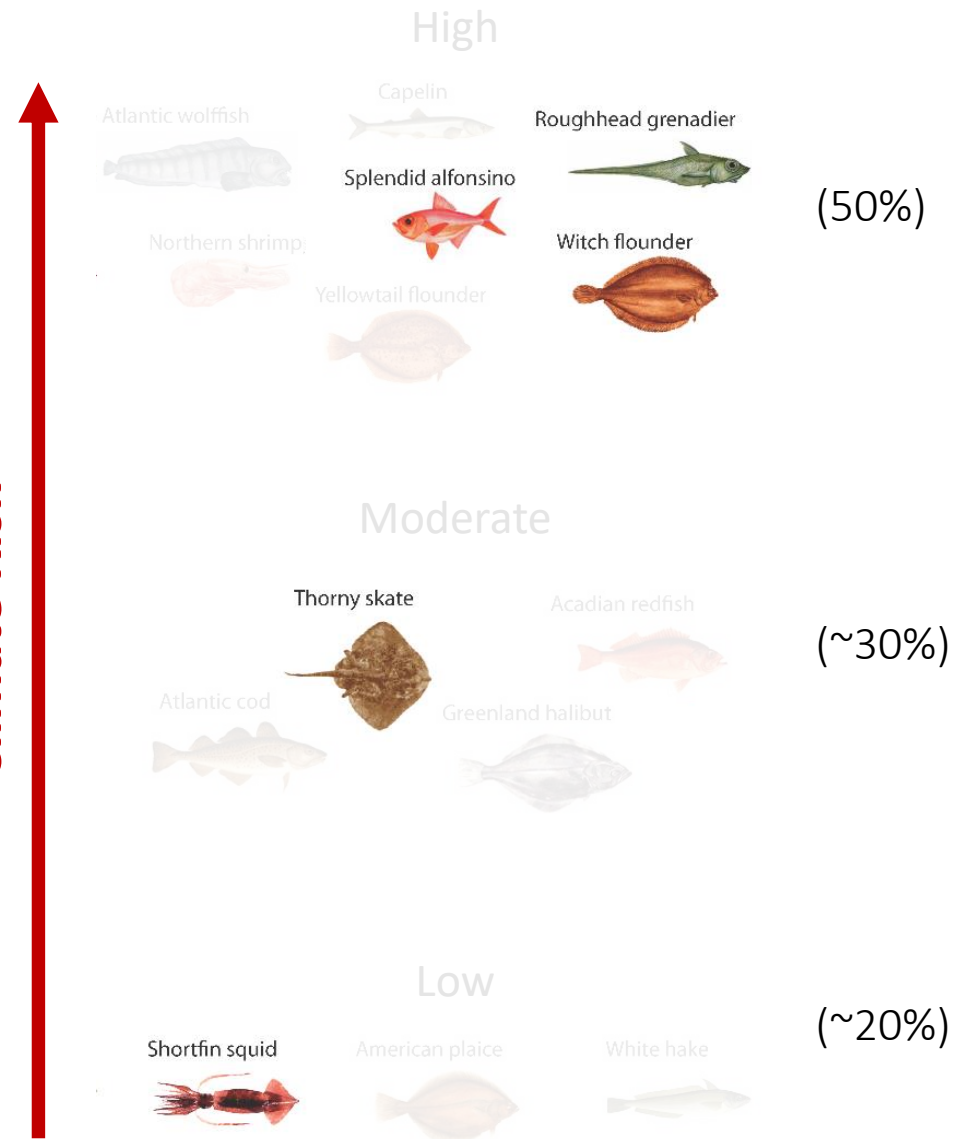
Climate Risk



# Climate impacts on NAFO species

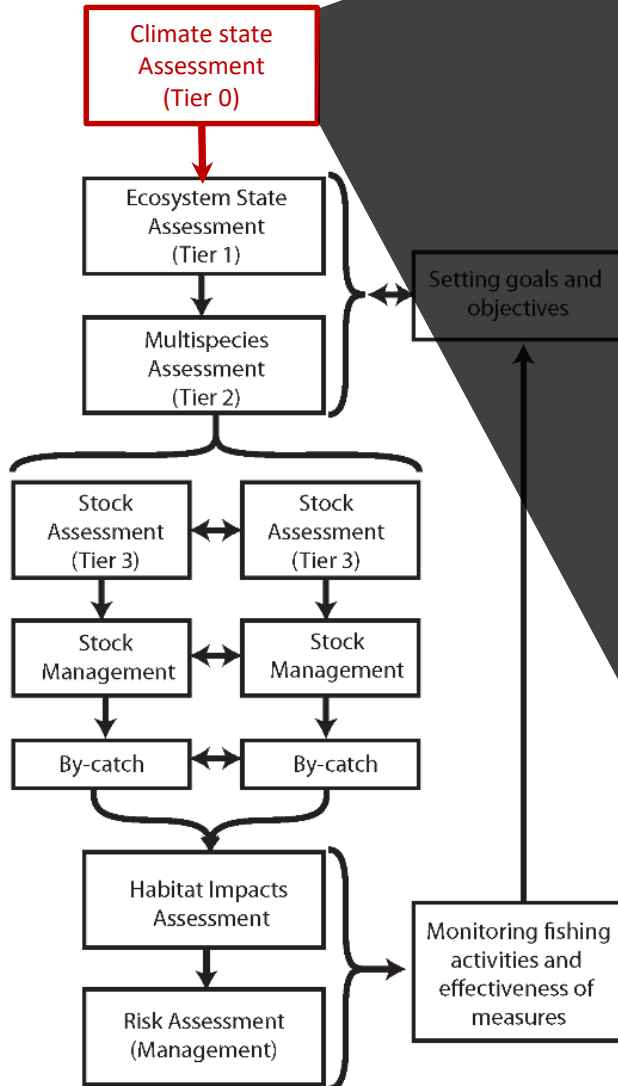
Few studies

Climate Risk



# Climate resilience in NAFO fisheries

## NAFO Ecosystem Approach to Fisheries Roadmap



**Annual report:** Climate state, changes across the NAFO area

- Historical, future, phenology, variability

### 1. Remote sensing:

- 1970s onward: daily, high resolution, synoptic (temperature, wind, NPP, etc.)
- Used in fisheries elsewhere but rarely in NAFO, Canada

### 2. Projections and forecasts:

- Used in fisheries (e.g., NOAA, CSIRO) to develop anticipatory capacity
- High resolution (~10km<sup>2</sup>) short-term (~5-20 years) projections (local, regional models)
- Forecasts desirable

### 3. Integrated climate data: Facilitate its interpretation and use

- Examples: NL climate index, Glorys, Copernicus, bottom temperature

### 4. Available climate data: Released with report

- Example: ICES Report on Ocean Climate (IROC)



# Climate resilience in NAFO fisheries

[ICES Oceanography - IROC](#)



News Events Calendar Library SharePoint Login Admin

Search Everything

ABOUT ICES SCIENCE DATA ADVICE JOIN US

Dataset Collections Data Portals Data Tools Assessment Tools Maps Vocabularies Guidelines and Policy

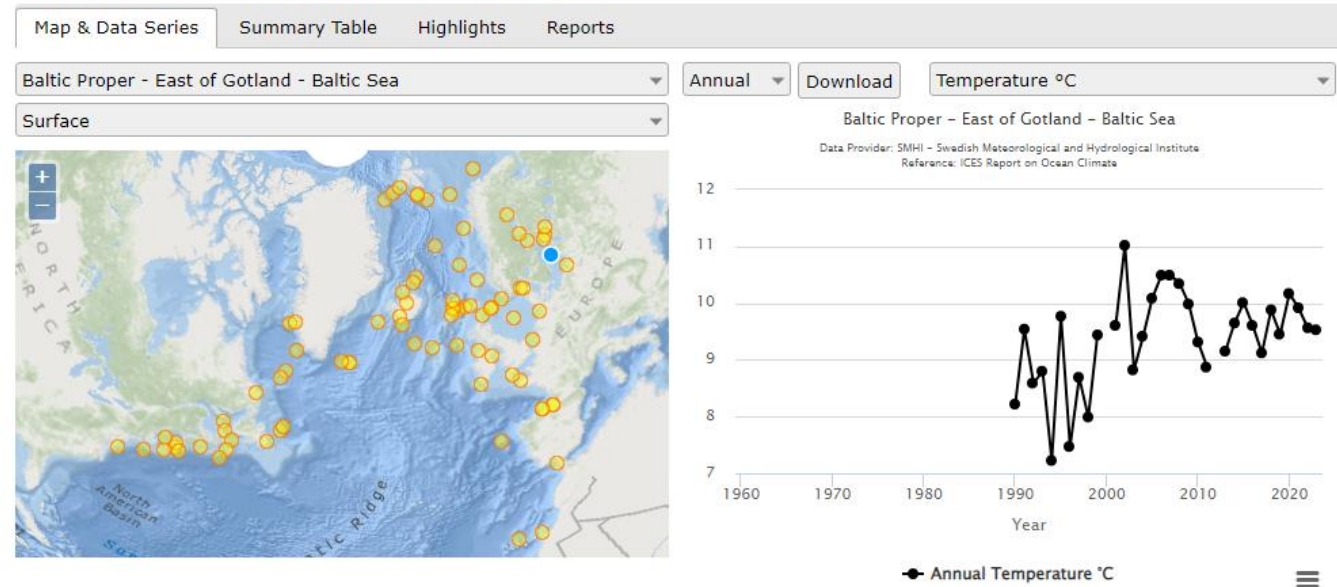
## OCEANOGRAPHY

### ICES Report on Ocean Climate (IROC)

Print it Send to Share it

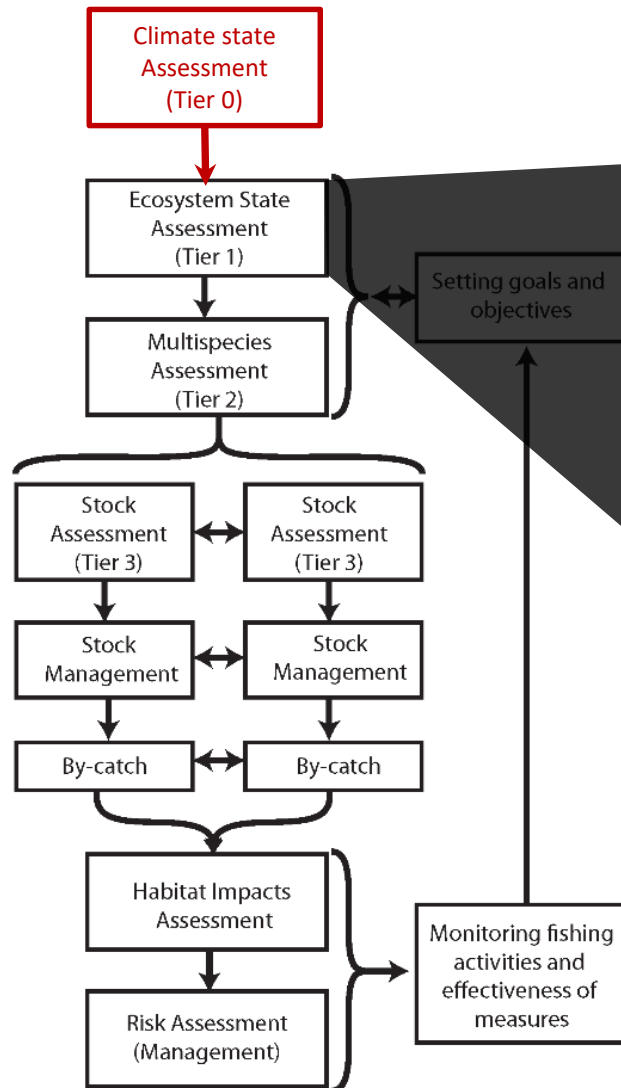
IROC provides summary information on climatic conditions in the North Atlantic.

Browse the most recent IROC [Data Series](#), [Summary Table](#), [Highlights](#) and/or published [Reports](#) below.



# Climate resilience in NAFO fisheries

## NAFO Ecosystem Approach to Fisheries Roadmap



### 1. Climate-driven productivity shifts:

- Climate variability and change impacts on ecosystem productivity and catch potential

### 2. Disease monitoring:

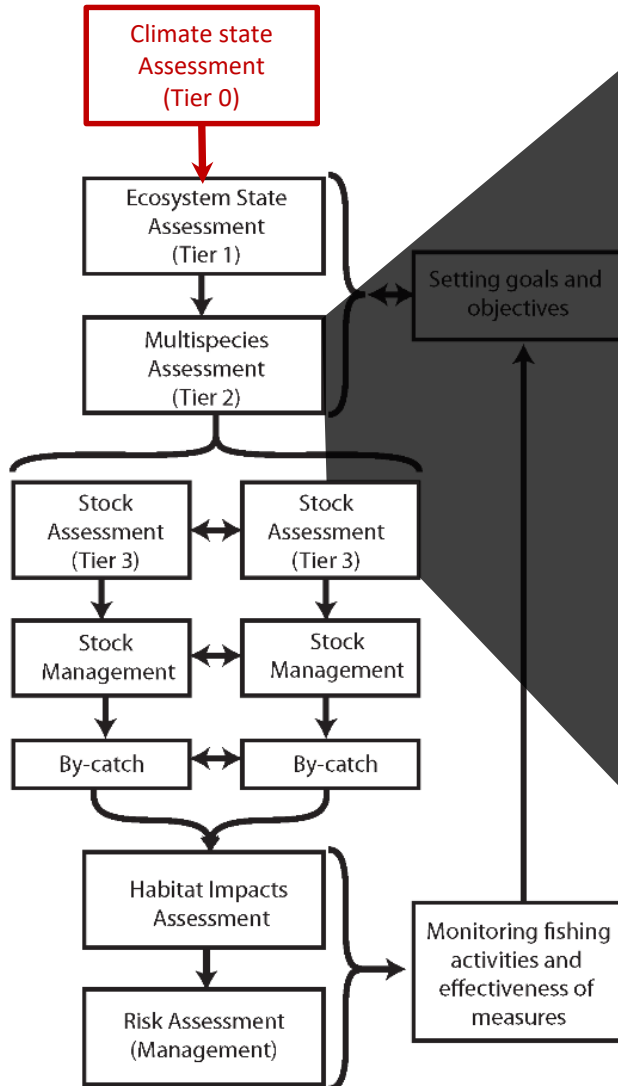
- *e.g.*, using eDNA, species distribution models

### 3. Climate risk monitoring:

- Geographic patterns of ecosystem level climate risk

# Climate resilience in NAFO fisheries

## NAFO Ecosystem Approach to Fisheries Roadmap



### 1. Species distribution shifts:

- Monitor: Survey coverage appropriateness
- Dynamic species distribution models (tier 3)
- Joint species distribution models (tier 2)
- Leverage real-time & forecasted climate data

### 2. Phenology match-mismatch:

- Monitor: Climate-driven recruitment failures
- Monitor: Survey coverage appropriateness
- Example: Phytoplankton-shrimp

### 3. Climate-driven trophic interactions:

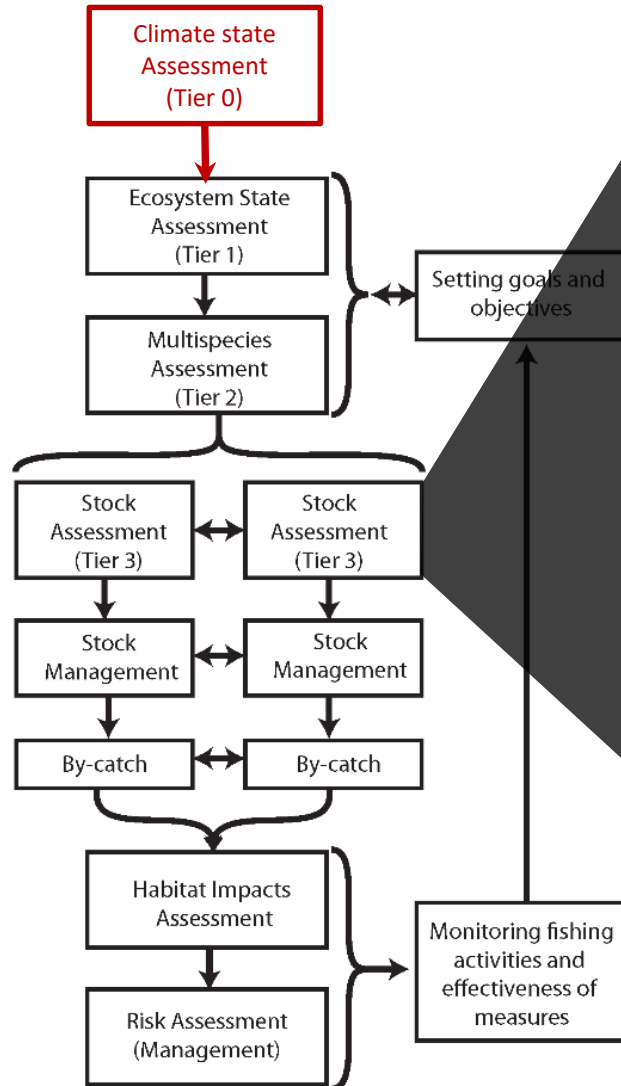
- Example: cod-shrimp

### 4. Climate risk:

- Assessed and monitored at the species and stock level as a standard practice

# Climate resilience in NAFO fisheries

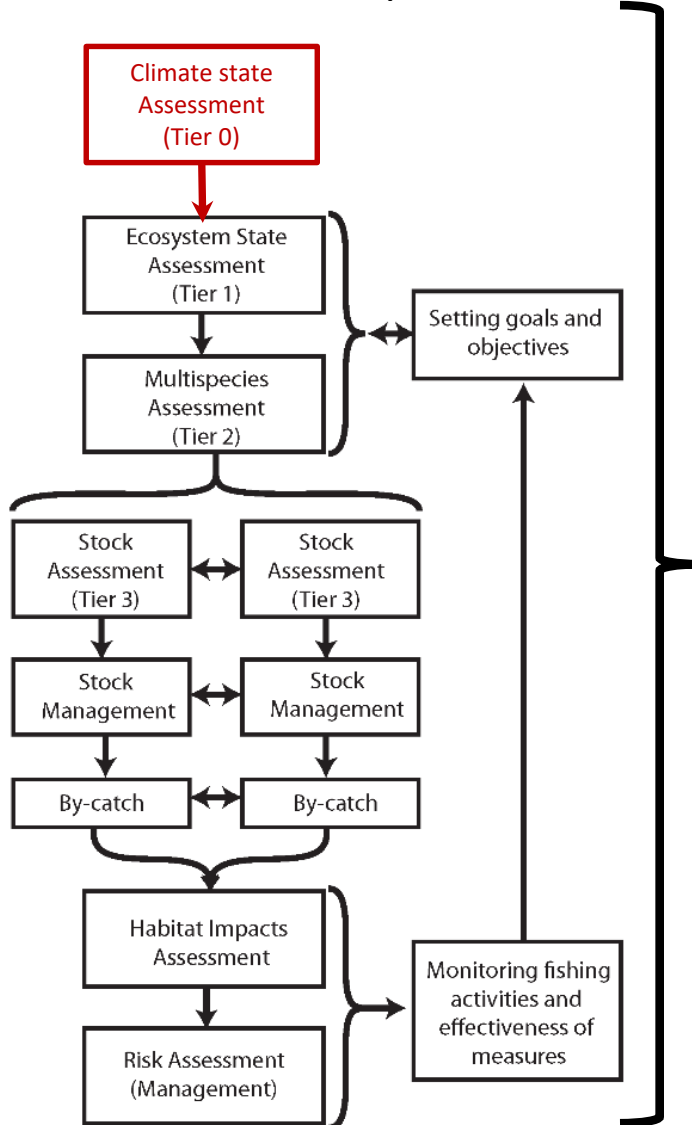
## NAFO Ecosystem Approach to Fisheries Roadmap



- 1. Climate informed stock assessments:** Where assessment models exist (33% of stocks)
  - Management strategy evaluations (MSE): Climate in operating models
  - Climate conditioned advice: Risk equivalency
- 2. Climate-considered harvest advice:** Where assessment models do not exist (66% of stocks)
  - Approach less well defined: Relies on knowledge of climate impacts
  - “Climate buffers” where uncertainty is high: *e.g.*, Peruvian anchoveta
  - Threshold-based harvest control rules: *e.g.*, California sardine
- 3. Climate impacts on early life stages:**
  - “Thermal bottlenecks”: Early life stages are often more sensitive to climate change, but less well evaluated → critical knowledge gap
- 4. Climate risk:**
  - Standard component of stock assessments

# Climate resilience in NAFO fisheries

## NAFO Ecosystem Approach to Fisheries Roadmap



- 1. Multidisciplinary collaboration:** Fisheries assessment is increasingly a multidisciplinary endeavor
  - Collaboration: climate scientists, oceanographers, ecologists, fisheries, social science involved in the assessment and advice provision
- 2. Climate risk:**
  - Priority for governmental and intergovernmental organizations (FAO, NOAA, DFO)
  - Core climate impact knowledge helping to make informed decisions
  - Spatially-explicit, quantitative, reproducible: Monitor risk
- 3. Climate response database:**
  - Scientific literature on climate changes and their impacts on NAFO species
  - “Evergreen”: Updated with new information

# Summary

## The NW Atlantic Ocean is a climate change hotspot now and in the future:

- The marine climate of the Northwest Atlantic is dynamic: strong seasonality, climate variability, change

## Impacts on marine life are numerous and complex:

- Winners and losers: Depends on location, taxonomy
- Novel, less predictable marine world: Challenge for management

## Pathways to foster climate resilience:

- Good data & knowledge as a foundation: Evidence-based decision making
- Sustainable management: Healthy populations more resilient
- Monitoring: Climate-driven shifts
- Assessments: Climate-considered harvest advice
- Multidisciplinary collaboration: Vital under climate change
- Avoid “analysis paralysis”: Planning and action

